

WHY IS COVID-19 TESTING SO DIFFICULT?

RESOURCES REQUIRED FOR QRT-PCR COVID-19 DIAGNOSTIC TESTING

STAFF



Clinical



Laboratory

REGULATION



Clinical
Laboratory
Improvement
Amendments

CLIA Certification

DURABLES



Micropipettes



Vortex



Centrifuge



qPCR Machine



Freezer



Fume Hood

CONSUMABLES



PCR Tubes



Microfuge Tubes



Gloves



Pipette Tips



Nuclease-Free Water



Swabs



Transport Media



Bleach



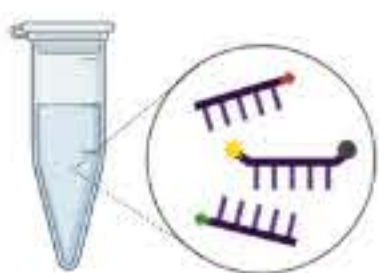
DNA Zap



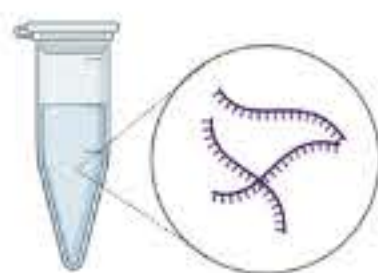
RNase Away



RNA Extraction Kit



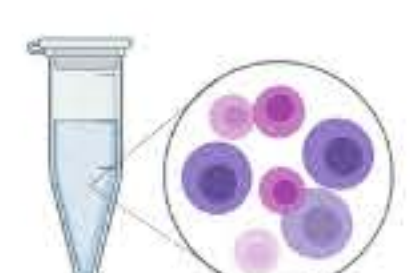
Primers & Probes



Positive Control



Master Mix



Human Specimen Control

Sources:

<https://www.fda.gov/media/134922/download>

<https://www.fda.gov/medical-devices/emergency-situations-medical-devices/faqs-diagnostic-testing-sars-cov-2>

<https://www.qiagen.com/us/products/discovery-and-translational-research/dna-rna-purification/multianalyte-and-virus/qiaamp-viral-rna-mini-kit/>

<https://www.cdc.gov/coronavirus/2019-ncov/lab/tool-virus-requests.html>



MIT Humanitarian
Supply Chain Lab

Draft, 3/21/2020